

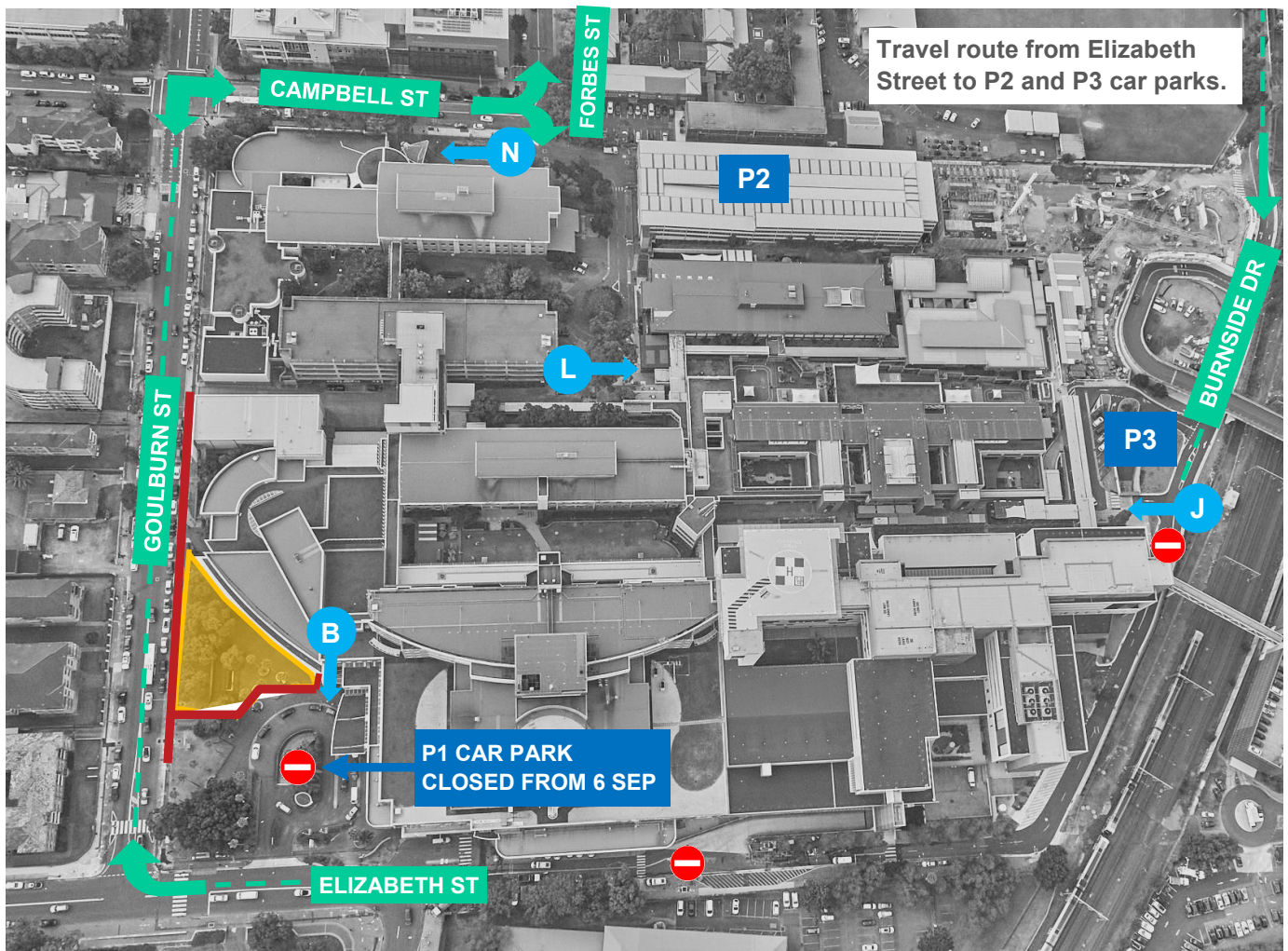
From Monday 6 September, the first stage of main works begin, impacting all pedestrians and vehicles travelling to the hospital.

Construction impacts from 6 September:

- **P1 car park closure:** The P1 car park off Elizabeth Street will permanently close. Visitors may use alternate parking in **P2 car park** off Campbell Street or **P3 car park** off Burnside Drive. To enter the hospital, please use **Entrance L, Entrance J or Entrance N** as displayed on the map below.
- **Elizabeth Street, front forecourt:** As part of site establishment, construction hoarding will be installed at the front forecourt of the hospital and along Goulburn Street preventing all pedestrian access to the **construction zone** shown in the map below. *Access to the Emergency Department, including the drop-off zone on Elizabeth Street, will be maintained at all times.*

KEY

-  Hospital entrance
  No entry
  Construction zone
  Construction hoarding
  Parking



Please note that the timing of works may be subject to change

THANK YOU FOR YOUR PATIENCE AS WE BUILD THE LIVERPOOL HEALTH AND ACADEMIC PRECINCT