

A great start to 2020!

The Liverpool Health and Academic Precinct (LHAP) has kicked off the new year with the commencement of early works.

Early works are construction activities such as demolition, road works and upgrades to services like gas, electricity and stormwater to help prepare the site for construction.

Site sheds and construction fencing have been installed on the hospital site and are the first signs of great things to come in 2020!

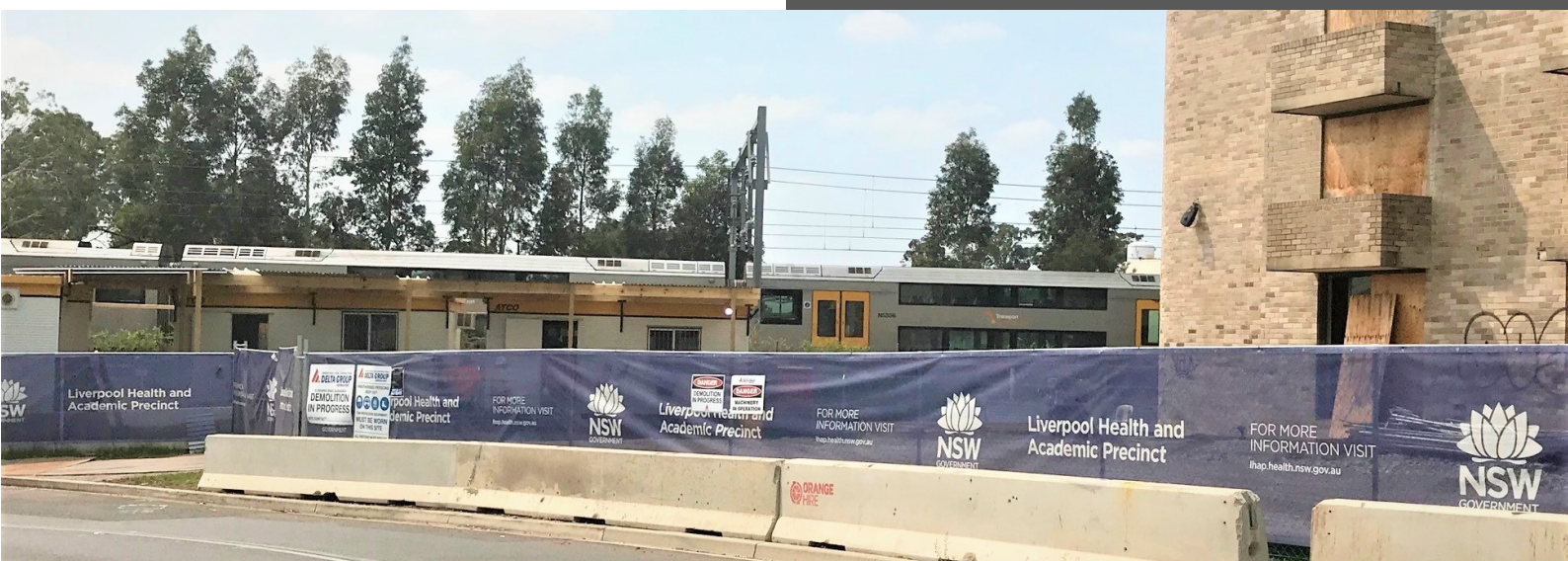
The safety of our workers and the public remains our highest priority at all times. We ask that staff and visitors follow signs and traffic control that will be in place to ensure safety.

This is the start of an amazing period in the history of the hospital and community.


We encourage our readers to stay up to date by following [@LiverpoolHospital](https://www.facebook.com/LiverpoolHospital) on Facebook and visiting www.lhap.health.nsw.gov.au



The \$740 million Liverpool Health and Academic Precinct will redevelop Liverpool Hospital into an international hub of medical excellence, research and education.



THANK YOU FOR YOUR PATIENCE AS WE BUILD THE LIVERPOOL HEALTH AND ACADEMIC PRECINCT

 (02) 8738 6670

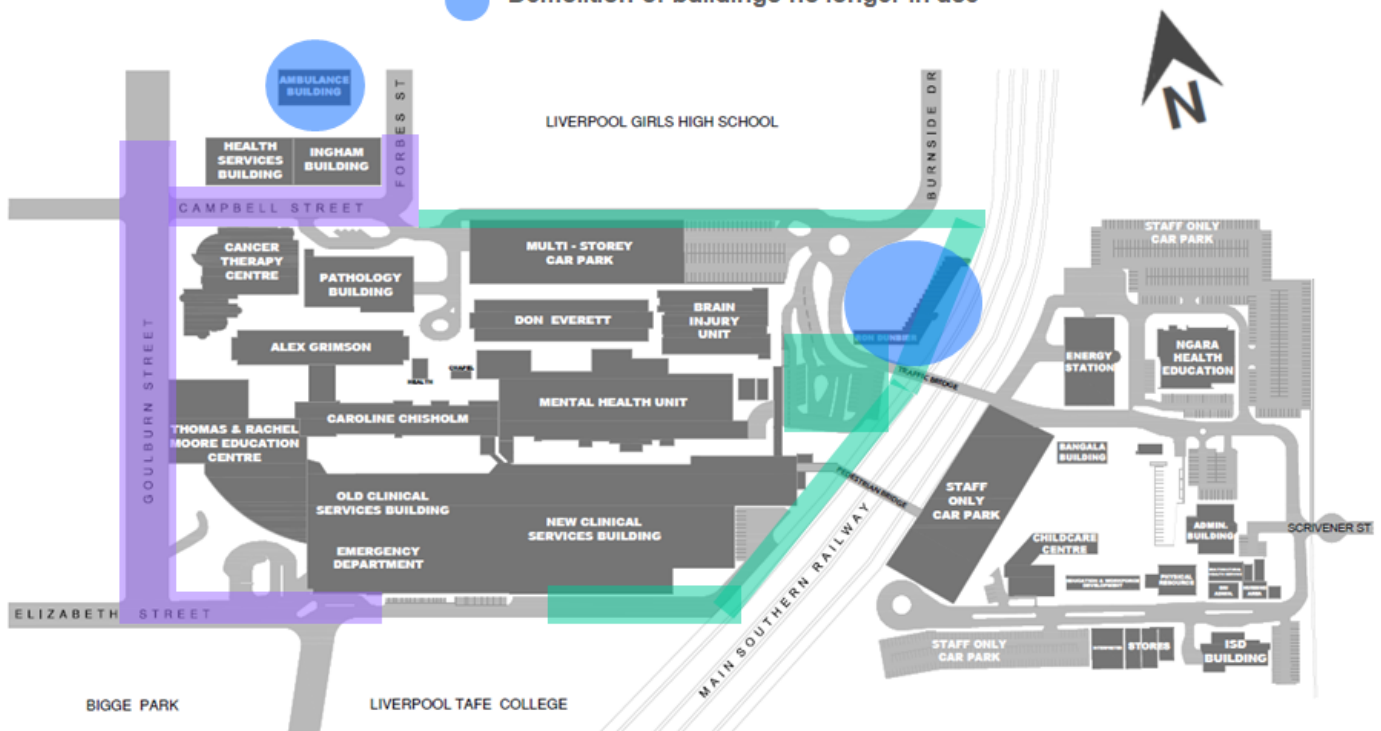
 SWSLHD-LHAP@health.nsw.gov.au

 lhap.health.nsw.gov.au

 Redevelopment Team, Liverpool Hospital, Locked Bag 7103 Liverpool BC NSW 1871

First stage of early works

- Works to upgrade ground services
- Road works and realignment
- Demolition of buildings no longer in use



The first stage of early works is being delivered by contractor Roberts Pizzarotti. The works include:

- Upgrades to ground services such as gas, electricity, sewer and stormwater in Campbell Street, Goulburn Street, Forbes Street and Elizabeth Street.
- Construction of new roads on the eastern side of the hospital campus.
- Demolition of the former ambulance station at 43 Forbes Street.
- Demolition of the Ron Dunbier building on Burnside Drive.

The general construction working hours for the project are 7am to 6pm, Monday to Friday, and 8am to 1pm Saturday, with some night works when required. Those impacted will be notified of works outside of general construction hours.

While we'll try to keep disruptions minimal, please be aware that pedestrian and traffic access around the hospital will change throughout the year as ground works and road works are carried out to enable construction of the LHAP.

Keen to know more?

Book an LHAP presentation for your organisation or community group to learn more about the exciting redevelopment by emailing SWSLHD-LHAP@health.nsw.gov.au

THANK YOU FOR YOUR PATIENCE AS WE BUILD THE LIVERPOOL HEALTH AND ACADEMIC PRECINCT